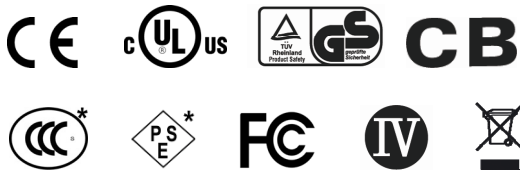


PS40 – 40W AC/DC Adapter

Datasheet



Features

- Wide input voltage 90 to 264VAC, 47 to 63Hz
- Single output
- Over voltage protection
- Over load Protections
- Short circuit protection

Description

- The PS40 is a 40 Watt AC/DC switching mode power supply
- Housing is UL 94V-0 compliant
- The PS40 meets FCC Part-15 class B and is designed to comply with UL/c-UL (UL 60950-1), TÜV/GS (EN 60950-1) and CE requirements
- All units are 100% burned in and tested

Specifications

Electrical characteristics	Test conditions	Min.	Typ.	Max.	Unit
Input Voltage		90		264	VAC
Input Frequency		47		63	Hz
Standby-Power Consumption				0.3	W
Inrush Current	Cold start at 25°C at 240VAC input			60	A
Output Power	Vin=90 to 264VAC	0		40	W
Unloaded Output Voltage				21	VDC
Rated Output Voltage		19	20	21	VDC
Rated Output Current			2		A
Efficiency	Full Load		75		%
Ripple & Noise	Peak - Peak			120	mV
Hold-Up Time	240VAC input rated load	3			ms
AC Switch On Time	Rated load			3	s
DC Output Rise Time	Load: max. load			120	ms
Insulation resistance	Input - Output	7			Mohms

Environmental	Test conditions	Min.	Typ.	Max.	Unit
Operating Temperature		-5		40	°C
Storage Temperature		-40		70	°C
Operating Humidity	Non-condensing	30		85	%
Storage Humidity	Non-condensing	10		95	%

General	
Protection	Overload; over voltage; short circuit
Output connector	DC plug 5.5*2.5*12.0 mm, inner "+", outer "-"
Output Cable	UL2468; 20AWG
Input Connector	IEC60320 C8

* will be applied after customer approval

PS40 – 40W AC/DC Adapter

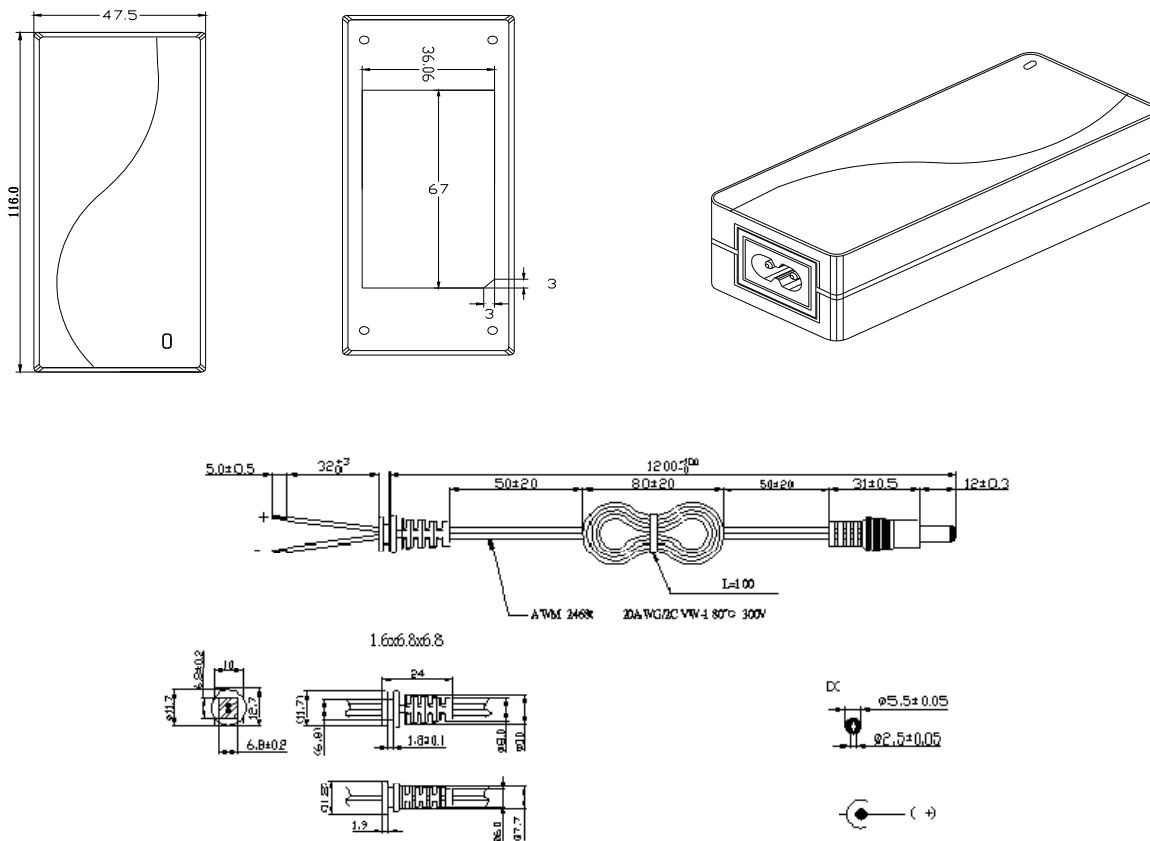


Datasheet

Safety & EMC		
Safety standards		IEC60950-1
Regulatory approvals	Europe	CE
	International	UL/CUL(UL60950-1)
		TÜV-GS
		CB
		PSE*
		CCC*
Electromagnetic Emissions & immunity	Europe	EN55022 and EN55024
	USA	FCC15 class B
		EN61000-3-2
		EN61000-3-3
		EN61000-4-2, 4/8kV, performance criteria B
Energy efficiency		CEC IV

Mechanical Details	
Housing dimensions (LxWxH)	116 x 47.5 x 33 mm, without cables and connectors
Output cable length	1200mm ±5%
Material	PC & ABS; UL94V-0

Mechanical Specifications



Germany / Headquarters	France	USA	Hong Kong / China
RRC power solutions GmbH Technologiepark 1 D-66424 Homburg / Saar	RRC power solutions SAS 4, rue de Charenton 2/3/4, Quai Blanqui F-94140 Alfortville	RRC power solutions Inc. 19713 Yorba Linda Blvd. #207 Yorba Linda, CA 92886-3532	RRC power solutions Ltd. 9/F Park Tower, 15 Austin Road Tsim Sha Tsui, Kowloon, Hong Kong
Tel.: +49 0 6841 9809-0 Fax: +49 0 6841 9809-280 E-Mail: sales@rrc-ps.de	Tel.: +33 0 1 3005 6100 Fax: +33 0 1 3005 6101 E-Mail: france@rrc-ps.com	Tel.: +1 714 777 3604 Fax: +1 714 777 3658 E-Mail: usa@rrc-ps.com	Tel.: +852 0 2376 0106 Fax: +852 0 2376 0107 E-Mail: hkrrc@rrc-ps.cn